

Part No.1911.1017

WAHL CLIPPER CORPORATION  
World Headquarters  
P.O. Box 578, Sterling, IL 61081

Wahl (UK) Limited  
Sterling House, Clipper Close  
Ramsgate, Kent CT12 5GG  
United Kingdom

Wahl Australia Pty Ltd.  
PO Box 456  
Acacia Ridge QLD 4110  
Australia


Wahl NZ Ltd.  
P.O. BOX 38 323  
Wellington Mail Centre  
Lower Hutt 5045  
New Zealand

Wahl India Grooming Products  
Pvt. Ltd.  
B-1002, 10TH Floor, B-Wing, Lotus  
Corporate Park,  
Off Jay Coach Flyover, Western  
Express Highway,  
Goregaon-East, Mumbai-400 063.  
India

Wahl Clipper (PTY) Ltd.  
PO Box 2916 Bedfordview  
Gauteng 2007  
South Africa

Wahl International Consumer Group  
Engelenburgstraat 36  
7391 AM Twello,  
Nederland

WAHL MEA FZCO  
Office # 123, Building # 6E- A  
PO Box. 371395  
Dubai Airport Free Zone, Dubai  
United Arab Emirates

WAHL Russia  
(ООО «Уолл Рус»)   
Российская Федерация  
129164, Москва,  
Ракетный бульвар, 16  
info@wahlrus.ru

Wahl Argentina  
Av. Alvarez Jonte 5655  
Buenos Aires (C1407GPK)  
Argentina

Wahl Clipper Brasil  
Rodovia Geraldo Scavone, 2300  
UC 45. Pedregulho.  
Jacarei - SP. CEP: 12305-490

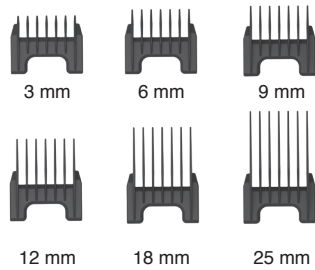
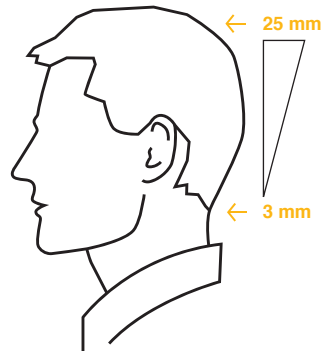
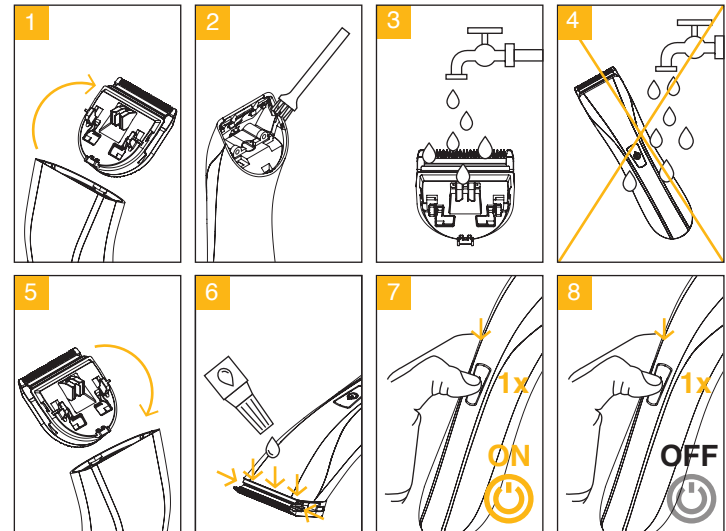
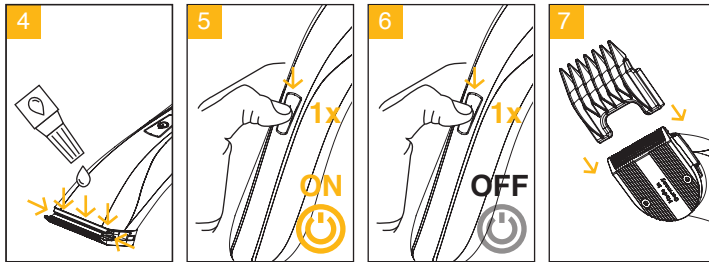
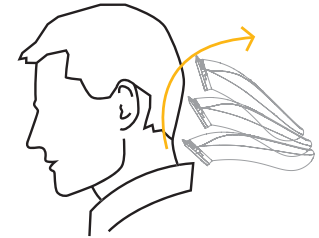
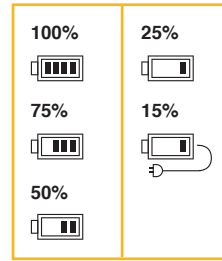
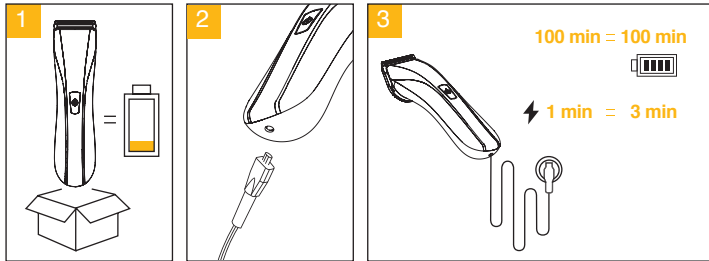
Wahl GmbH  
Foggenbachweg 9  
78089 Unterkirnach,  
Germany

WAHL Spain  
Fernando Giner de los Rios 12  
46910 Sedavi  
Valencia, Spain

© 2019 Printed in Hungary  
Wahl® is a registered trademark  
of Wahl Clipper Corporation  
[www.wahl-consumer.com](http://www.wahl-consumer.com)

## 1911 WAHL Lithium Pro Clipper

MODEL/TYPE 1911



1911 WAHL Lithium Pro Clipper

1911 WAHL Lithium Pro Clipper

